

Join dozens of thriving medical practices at Cummings Center

*Available medical suites
from 2,000 to 16,000 SF*

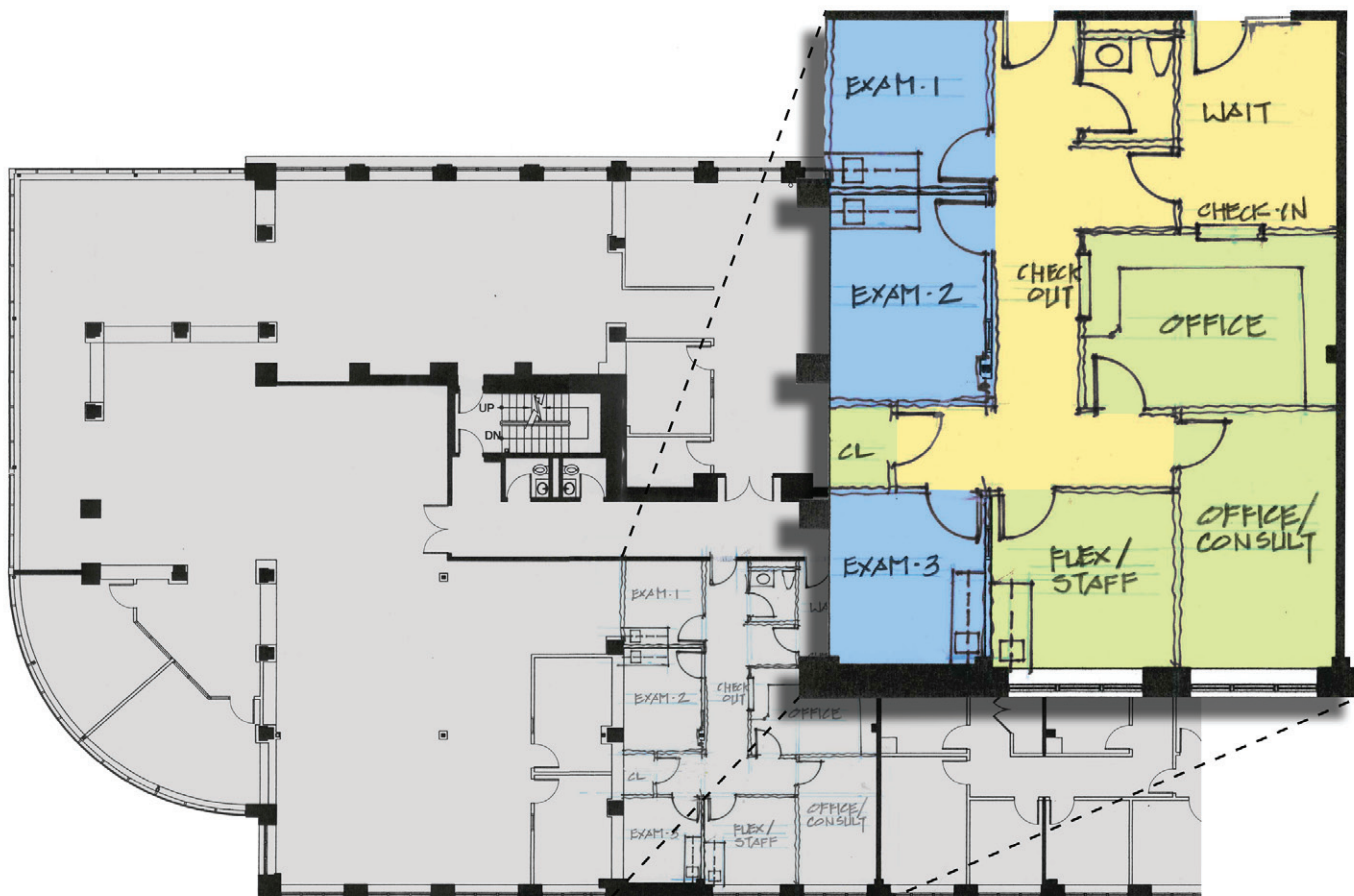


Minutes to Beverly Hospital, North Shore Medical Center, and Lahey Medical Center

Join the wide variety of medical providers at Cummings Center's Medical Center. A large selection of medical suites are move-in ready or can be tailored by our design and construction teams.

Advantages to leasing with Cummings Properties

- Energy efficient, first-class buildings.
- Expansion space guarantee, ensuring a firm's growth will be accommodated.
- Comprehensive in-house services, including leasing, design, construction, and property management.
- Full-service leases that include common area maintenance, building-standard structural and mechanical maintenance, landscaping, snow removal, building insurance, base real estate taxes, and professional property management services.



Prototypical Medical Suite - 900 Cummings Center, Suite 225-U



Cummings Center Campus Conveniences

- Eight eateries
- Full-service fitness facilities
- Comprehensive recycling programs
- Free daytime surface and covered parking
- On-site child, adult day care, and dog day care
- U.S. Post Office, dry cleaner, salons, spas, and more
- Two banks and many professional and healthcare services
- Waterfront nature trails, picnic areas, parks, and two scenic ponds

Cummings Center Location and Access

- 18 miles north of Boston
- Easy access to Routes 1 and 95
- One mile from Route 128 at Routes 1A and 62
- Close to Beverly Hospital and North Shore Medical Center
- On-site MBTA/CATA bus stop, nearby commuter rail and airport, and dedicated bicycle storage